

2190 Boul. Dagenais West  
LAVAL (QUEBEC)  
CANADA  
H7L 5X9

TEL: 514.337.4415  
FAX: 514.337.4029

info@burcam.com



# INSTALLATION INSTRUCTIONS

## MODEL 300308P

### UTILITY PUMP

Please read these instructions carefully. **Failure** to comply to instructions and **designed** operation of this system, may **void** the warranty.

Your pump has been carefully packaged at the factory to prevent damage during shipping. However, occasional damage may occur due to rough handling. **Carefully inspect your pump** for damages that could cause failures. Report any damage to your carrier or your point of purchase.

**NEVER RUN  
THIS PUMP  
DRY**



# SAFETY INSTRUCTIONS:

This fine pump that you have just purchased is designed from the latest in material and workmanship.

Before installation and operation, we recommend the following procedures:

- A** CHECK WITH YOUR LOCAL ELECTRICAL AND PLUMBING CODES TO ENSURE YOU COMPLY WITH THE REGULATIONS. THESE CODES HAVE BEEN DESIGNED WITH YOUR SAFETY IN MIND. BE SURE YOU COMPLY WITH THEM.
- B** WE RECOMMEND THAT A SEPARATE CIRCUIT BE LEAD FROM THE HOME ELECTRICAL DISTRIBUTION PANEL PROPERLY PROTECTED WITH A FUSE OR A CIRCUIT BREAKER. WE ALSO RECOMMEND THAT A GROUND FAULT CIRCUIT BE USED. CONSULT A LICENSED ELECTRICIAN FOR ALL WIRING.
- C** THE GROUND TERMINAL ON THE THREE PRONG PLUGS SHOULD NEVER BE REMOVED. THEY ARE SUPPLIED AND DESIGNED FOR YOUR PROTECTION.
- D** NEVER MAKE ADJUSTMENTS TO ANY ELECTRICAL APPLIANCE OR PRODUCT WITH THE POWER CONNECTED. DO NOT ONLY UNSCREW THE FUSE OR TRIP THE BREAKER, REMOVE THE POWER PLUG FROM THE RECEPTACLE.

## APPLICATION

- ☐ Designed to use to empty waterbeds, aquariums, transferring and / or removing water from roof tops, puddles, etc.
- ☐ This utility pump is designed for a portable application, for dewatering around homes and farms.

- ☐ CAPACITY:
  - 5' 450 US GPH
  - 20' 275 US GPH
  - 40' 75 US GPH

FRICION LOSS  
IN  
PIPE NOT  
INCLUDED

## FEATURES

- ☐ Non corrosive material.
- ☐ Stainless steel mechanical rotary seal.
- ☐ Thermal and overload protection.
- ☐ 1/12HP, 115VAC, 60Hz.

### NOTICE

This unit is not designed for applications involving salt water or brine .  
Use with salt water or brine will void warranty.

# IMPORTANT INFORMATIONS

- ☐ The automatic thermal overload protection shuts the motor off when it overheats because of low voltage, trash in the pump or other problems. Normally, motor cools in 10 minutes and restarts automatically.
- ☐ If this pump is used for pumping mildly abrasive liquids like lake water, keep hose inlet above mud and sand. All severely abrasive liquids will wear the pump quickly and void warranty.
- ☐ This pump will handle most common waterlike liquids (water, brines, light lube oil, etc) at temperatures of 0°F to 120°F (-18°C to 50°C). Thick liquids, fuels (gasoline etc) or other flammable liquids, solvents, thinners and strong acids are totally prohibited.
- ☐ Never operate the pump against a closed or clogged discharge.
- ☐ Use 1/2" (13mm) minimum pipe. Note that the best performance occurs when the suction line is as short and direct as possible. For any lines of 40' or longer, install a 3/4" (19mm) pipe size.
- ☐ After few months of inactivity, the impeller may get bone dry. If this happens, replace the impeller.
- ☐ The motor is drip-proof but not waterproof.
- ☐ Motor brushes should be replaced every 300 hours of use. Remove brush cap to replace brush only.
- ☐ Never add oil to motor or brushes.

## PRIMING

This unit will prime to 10 feet if you follow these instructions. Drop 1 tablespoon of vegetable oil into pump inlet and outlet before each use. Add water to suction pipe and install a foot valve to make easier priming. For a suction from 10' to 20' depth, a foot valve is mandatory and the suction line must be filled before pump start. If the pump does not prime within one (1) minute, unplug from receptacle and perform next steps:

- ☐ Air leaks in suction pipe. For a garden hose, be sure fittings are tight and rubber washers are in good condition. For other pipe types, use teflon tape on all threads.
- ☐ Verify foot valve action

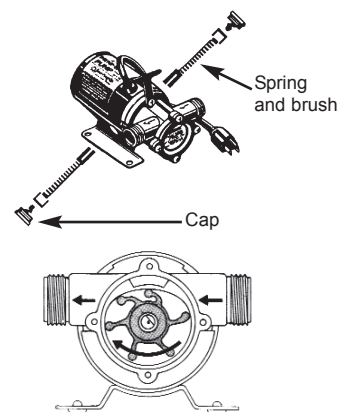
- ☐ Verify for collapsed suction hose or plugged suction line
- ☐ Verify for liquid supply too far away or too far below pump (more than 20 feet)
- ☐ Worn out or damaged impeller
- ☐ Severe abrasive wear of volute plate or pump body. Remove pump cover to access these parts. Proceed carefully to avoid damaging the “O” ring.

## INSTALLATION STEPS

- STEP 1** Fill liquid inlet and outlet of pump with one (1) table spoon of vegetable oil.
- STEP 2** Install suction and discharge line
- STEP 3** Plug cord into a 3 prong 115 VAC receptacle.
- STEP 4** Unplug pump when liquid supply is exhausted. The overheat due to dry running will damage impeller or weld it to the pump body.

## MAINTENANCE

- ☐ The shaft motor seal is generally good for the life of the pump. When shaft seal leaks, it is because enough abrasives have been pumped to wear deep grooves in the shaft under the seal. In this situation, the purchase of a whole unit will cost less than repairs (motor and pump).
- ☐ Brush replacement is done quickly and easily. Unscrew brush cover, then remove spring and worn brush. Insert the replacement brush and spring kit in the same position and replace brush cover. Never drop oil in brush area. This may damage the motor and void warranty.
- ☐ Impeller replacement is also easy to do. Remove pump cover screws and cover. Remove worn impeller. Clean out inside of pump body and examine the volute plate. If worn, turn over. Wipe a small quantity of oil and install the replacement impeller by twisting in clockwise direction. This will blend the blades in place. Using screws, replace pump cover. Do not overtight.



# WARRANTY LIMITATION

## The following situations void the warranty

- ☐ Running pump dry
- ☐ Handling severe abrasive solution, fuels (gas etc.) or other flammable liquids, thinner, acid or other strong chemical solutions.
- ☐ Handling liquids hotter than 120°F (50°C).
- ☐ Normal wear.
- ☐ user abuse, including immersing pump
- ☐ Commercial or industrial use.
- ☐ Alterations to electric cord or plug.
- ☐ Wholly or partly disassembled motor.

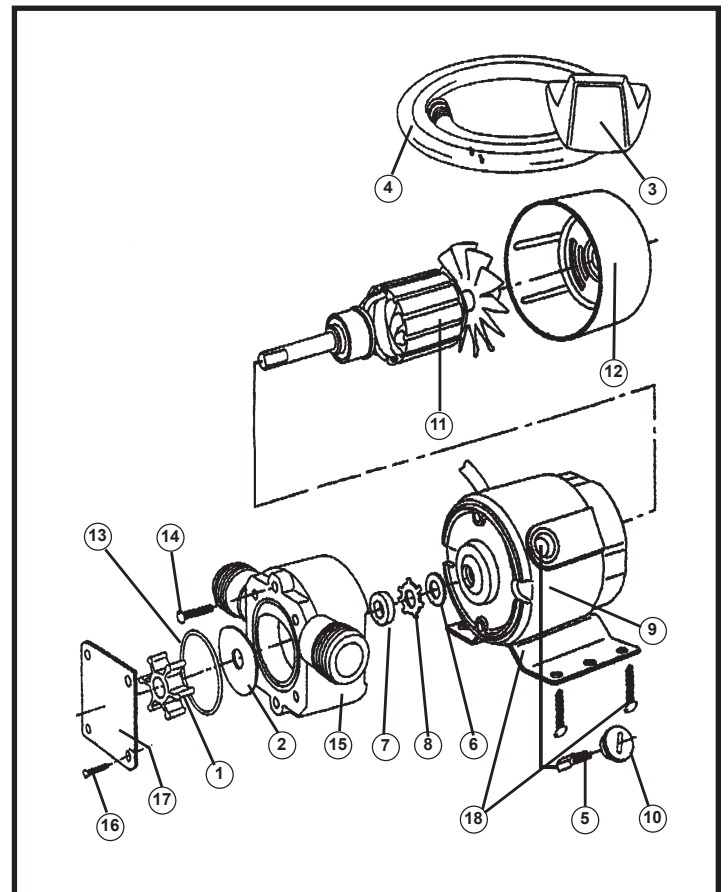
## REPAIR PARTS

### MODEL

**300308P**

### UTILITY PUMP

REF	#	DESCRIPTION
1	300556	Impeller
2	300578	Volute plate
3	300589	Puddle scoop
4	300588	Hose
5	300559	Carbon brushes kit (2)
6	300582	Sand slinger
7	300580	Rubber seal
8	300581	Snap ring
9	300583	Complete motor 115 Volt
10	300584	Brush house cover
11	300585	Rotor and fan
12	300586	Fan cover
13	506053S	Pump body "O" ring
14	300587	Pump body screws (2)
15	300579	Pump body
16	300575	Pump cover screws (4)
17	300576	Pump cover
18	300590	Motor support
19	300593	Complete motor 12 Volt ( <b>300301P</b> )



Repair parts may be ordered from your authorized point of sale or from  
**BUR-CAM PUMPS**

# TROUBLE SHOOTING GUIDE CHECKLIST

NEVER MAKE ADJUSTMENTS TO ANY ELECTRICAL APPLIANCE OR PRODUCT WITH THE POWER CONNECTED. DON'T JUST UNSCREW THE FUSE OR TRIP THE BREAKER, REMOVE THE POWER FROM THE RECEPTACLE.

TROUBLE	PROBABLE CAUSE	ACTION
Motor does not run.	Switch is off position Blown fuse Tripped breaker Plug disconnected Corroded plug Low water level Thermal overcharge Defective switch/float Defective motor Improper float position	Turn switch to on position Replace Reset Re-install Clean prongs Add water and verify Cool the motor Replace Replace/repair Check movement
Pump does not deliver to full capacity.	Jammed impeller Plugged check valve Blocked suction/inlet Discharge leak Blocked line/pipe Worn impeller Defective motor	Clean Clean/replace Check for debris in pit and clean Repair Check for debris or ice Repair/replace Replace

## TO THE END CONSUMER

*If you have any problems with the product, before advising the store, where you've purchased the pump, please contact us at 514 337-4415 , and ask for our sales department, and they will be pleased to help you with any questions you might have, concerning your installation.*