



SRA-125-CV shown
(pump not included)

MYERS[®]
SRA SERIES
1¼" TO 3" LIFT-OUT PACKAGES
FOR GRINDER, SEWAGE AND
EFFLUENT PUMPS

MYERS® SRA SERIES

Lift-out Packages

Technical Information

Myers SRA Lift-out Package makes installation and service of grinder, sewage and effluent pumps safer and easier. The SRA adapts to nearly any vertical discharge wastewater pump from 1-1/4" to 3". Support brackets are stainless steel for sewage, dewatering or effluent pumping applications.

NOTE: SRAX-125 package available for Class 1, Division 1, Groups C & D installations.

For more information on safer, easier pump installation and service call your Myers distributor today, or the Myers Ashland sales office at 419-289-1144.

Lift-out Package Offers Ease of Service and Reinstallation.

- Fast and easy pump removal.
- No need for personnel to enter basin.
- Offered with or without check valve.
- Handles 1-1/4" to 3" discharge pumps.
- Heavy-duty cast iron construction.
- Stainless steel brackets ensure parts will not corrode.
- Positive machine fit with O-ring seal.

System includes:

- Mounting base.
- Lift-out elbow with check valve.
- Guide plate.
- Fasteners and O-rings.

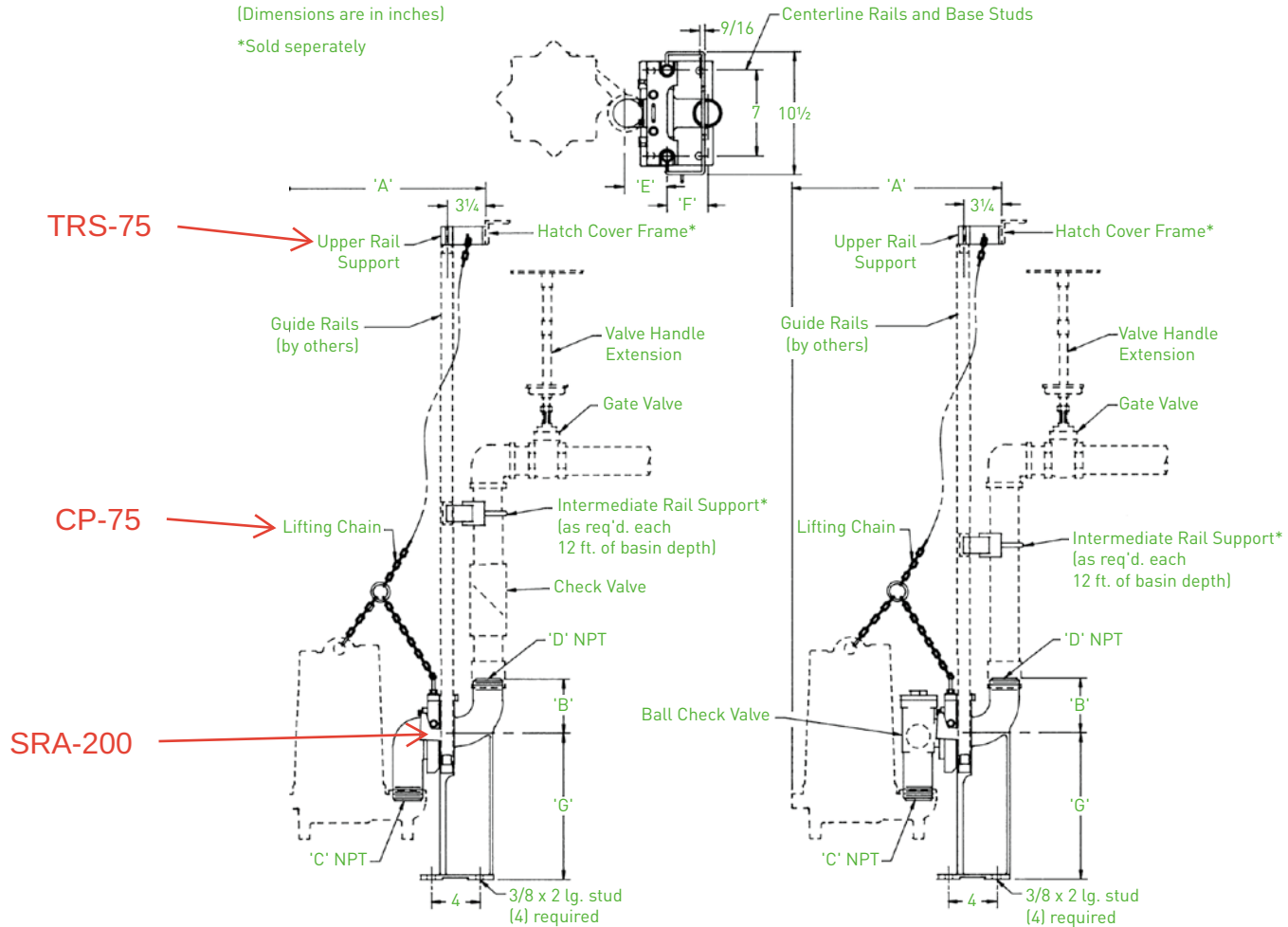


Construction Materials					
	SRA-125	SRA-150	SRA-200	SRA-300	SRA-320
Elbow Size	1-1/4" x 2"	1-1/2" x 2"	2" x 2"	3" x 3"	2" x 3"
Guide Plate	SST	Galv/SST	Galv/SST	Galv/SST	Galv/SST
Lift-out Elbow w/check valve	Cast Iron**	Cast Iron	Cast Iron	Cast Iron	Cast Iron
Mounting Base	Cast Iron	Cast Iron	Cast Iron	Cast Iron	Cast Iron
Fasteners	SST	SST	SST	SST	SST
O-Ring	BUNA-N	BUNA-N	BUNA-N	BUNA-N	BUNA-N
Guide Rails*	1" SST	3/4" SST	3/4" SST	3/4" SST	3/4" SST
Top Rail Support*	TRS-100	TRS-75	TRS-75	TRS-75	TRS-75
Chain*	Galv/SST	Galv/SST	Galv/SST	Galv/SST	Galv/SST

* Must be ordered separately.

**Bronze for hazardous locations.

Advantages by Design



PUMP	'A'	LIFT-OUT
MG/MGH200	16-1/16"	SRA-125 SRA-125-CV
WGL20	15-3/8"	
WG20	15-3/8"	
P Series	17-3/8"	SRA-150 SRA-150CV
ME3F	16-1/8"	
ME3H	15-7/8"	
WHR	16-3/4"	
WHRH	16-5/8"	SRA-200 SRA-200CV SRA-320
MWH/MW	18-1/8"	
SRM4	15-1/2"	
ME Series	17-5/8"	
3MW (3450)	19-1/4"	SRA-300
3MW (1750)	20-5/16"	

Lift-out	'B'	'C'	'D'	'E'	'F'	'G'
SRA-125	4-3/8"	1-1/4"	2"	2-15/16"	3-1/4"	9-11/16"
SRA-150	4-5/16"	1-1/2"	2"	3-1/4"	3-3/8"	12"
SRA-200	4-5/16"	2"	2"	3-1/4"	3-3/8"	12"
SRA-320	6-1/2"	2"	3"	3-1/4"	4-11/16"	12"
SRA-300	6-1/2"	3"	3"	4"	4-11/16"	12"
SRA-125-CV	4-3/8"	1-1/4"	2"	2-15/16"	3-1/4"	9-11/16"
SRA-150-CV	4-5/16"	1-1/2"	2"	3-1/4"	3-3/8"	12"
SRA-200-CV	4-5/16"	2"	2"	3-1/2"	3-3/8"	12"



740 EAST 9TH STREET,
ASHLAND, OHIO 44805
WWW.FEMYERS.COM

269 TRILLIUM DRIVE, KITCHENER,
ONTARIO, CANADA N2G 4W5
WWW.FEMYERS.COM

Because we are continuously improving our products and services, Pentair reserves the right to change specifications without prior notice.
K3738 01/04/13 © 2013 Pentair Ltd. All Rights Reserved.