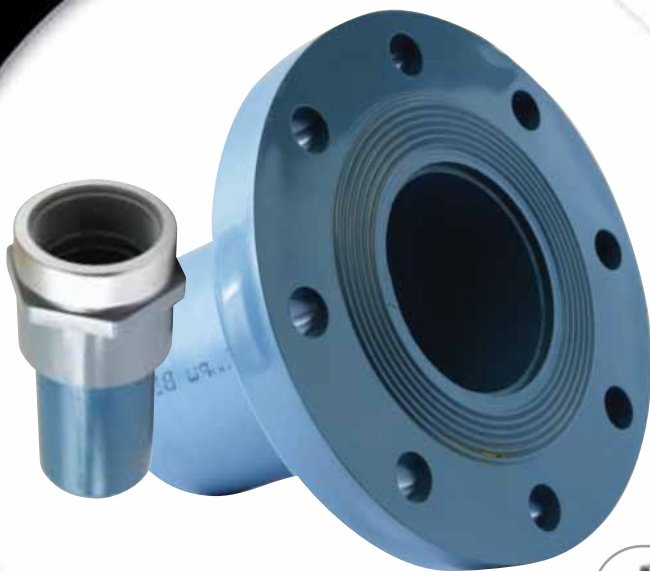


NEW PRODUCT SHOWCASE

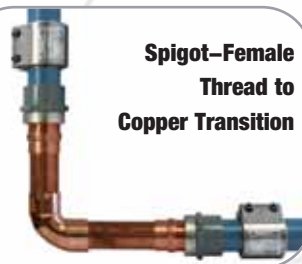
Repair & Return to Service Immediately

For instances when a repair cannot be scheduled or delayed, and getting a downed system back up and running in the fastest time possible is needed, IPEX now has a quicker solution.

When used in conjunction with the AquaRise® Maintenance Couplings these pre-solvent welded assemblies provide a transition to copper to complete the necessary repairs. Although we encourage AquaRise product to be used in AquaRise system repairs – this repair method can get your system back up and running without needing to account for solvent cure times in your repair schedule.



Spigot–Female Thread to Copper Transition



Spigot–Flange to Copper Transition



The spigot assemblies are sold separately from the required Maintenance Couplings and or the Full Pressure Flange Kits. (See reverse for information)

Available in Spigot x Flange and Spigot x Female Thread configurations, with an option for sizes from 1" to 4".

Spigot x Female Thread Availability

Size (in)	Part No.
1"	359063
1-1/4"	359064
1-1/2"	359077
2"	359065
3"	359066

Spigot x Flange Availability

Size (in)	Part No.
2-1/2"	359057
3"	359058
4"	359059

AquaRise® is a hot and cold potable water distribution system for commercial, industrial and high-rise buildings. With over 15+ years' experience manufacturing industry-leading CPVC systems, AquaRise offers numerous benefits over metal with a system that's fully approved for non-combustible applications.

Like all IPEX integrated solutions, AquaRise pipe, valves and fittings are designed to function as a system, yet flexible enough to work universally with other products. Since it's built and backed by IPEX, AquaRise also comes with technical support and onsite trouble-shooting — all from one reliable supplier who stands behind the complete piping system.



IPEX

Maintenance couplings are manufactured by Straub Tadco Inc. and distributed by IPEX Inc.
AquaRise® is a trademark of IPEX Branding Inc.
Full pressure flange kit components are manufactured by a variety of suppliers and distributed by IPEX Inc.

IPEX Inc.

Toll Free: (866) 473-9462

www.ipexinc.com



AquaRise® Maintenance Couplings

AquaRise® Maintenance Couplings are a new and important addition to the AquaRise product line. Their mechanical joint end connections and rubber-lined stainless steel construction provide a fast 'pipe to pipe' alternative connection for AquaRise. They are ideal for quick repairs of AquaRise pipe in need of maintenance without possible delays due to necessary cure times associated with solvent cement. The couplings also permit easier tie-ins to existing AquaRise systems when used with pre-cemented pipe-end assemblies.

As a reminder – couplings are suitable for pipe to pipe connections only and are not suitable for use with any spigot ends of molded fittings.

The spigot repair assemblies featured on the front side are fabricated with pipe stubs and may be used with these maintenance couplings.

FEATURES & BENEFITS:

- Faster and Easier Connection to AquaRise®
- Reduces System Down Time
- Approved for Hot & Cold Potable Water
- Teflon® Coated EPDM Gasket
- Meets Pressure & Temperature Ratings
 - 400 psi at 73°F (23°C)
 - 150 psi at 160°F (71°C)

AquaRise Maintenance Couplings have metallic grips to provide restraint against pull out. Specific levels of pullout resistance forces are shown in the table below.

Pull Out Resistance

Product No.	Nominal Diameters AquaRise Pipe (in.)	Pull Out Resistance @ 22°C		Torque Wrench Allen Socket Size (mm)
		(N)	Lb(f)	
359204	1	7,500	1,700	6
359205	1-1/4	11,000	2,500	6
359206	1-1/2	14,000	3,100	6
359207	2	20,000	4,500	6
359208	2-1/2	30,000	6,700	8
359209	3	45,000	10,000	8
359210	4	60,000	13,500	8

Note: Torque wrench kits are available through IPEX; tighten locking bolts to the final prescribed torque shown on the coupling label



Not shown: receiving flange between gasket and washer

AquaRise® Full Pressure Flange Kit

AquaRise® Full Pressure (FP) Flange Kits have been developed to enhance the pressure capability of an AquaRise CPVC one-piece flange. The AquaRise FP Flange Kits have a pressure rating equal to that of AquaRise CPVC pipe in each of the 3 sizes offered (2-1/2" through 4").

Size	Product Number	Max. Working Pressure at 73°F/23°C		Max. Working Pressure at 160°F/71°C	
		psi	kPa	psi	kPa
2-1/2"	359040	400	2,755	150	1034
3"	359041	400	2,755	150	1034
4"	359043	400	2,755	150	1034

FEATURES & BENEFITS:

- The pressure rating is valid for connections to solid flat face metal flanges or to a second FP Flange Kit
- The flange kit assembly is NSF listed to the requirements set forth by ASTM F1970 and CSA B137.6
- The special gasket and IPEX CPVC one-piece flange contained within this kit are certified to ANSI/NSF Standard 61

Kit includes:

- One (1) Two-piece steel backing ring
- One (1) Stress-Saver XP gasket (75-80 durometer hardness)
- SAE J429 Grade 8 bolts with associated hex nut
- Two (2) flat washers per bolt
- One (1) AquaRise CPVC one-piece socket flange

Note: Mating to valves with integrated gaskets must be done with an intermediate spacer and longer bolts. Bolts must be of the same grade as what is supplied in the kit.