



The new degree of comfort.™



Residential Gas
**Prestige High Efficiency Condensing
Power Direct Vent Water Heaters**

Prestige™ High Efficiency Condensing Power Direct Vent induced draft gas water heater is a perfect choice when indoor air quality is a concern

Performance

- FHR: Up to 87-gallons for natural and LP gas
- Recovery: 43.6 to 48.5 at a 90° F rise

Self-Diagnostic System

- Integrated system control for easy installation and service
- Diagnostic system control can be replaced without draining the water heater



Low Emissions

- Eco-friendly burner, low NOx design

Features

- Power direct vents are an ideal choice when either indoor air quality or negative air pressure are concerns
- Two-pipe system: one pipe pulls in outside air for combustion and the other exhausts combustion gases
- 120 VAC, 60Hz, induced draft blower
- New whisper quiet blower

Innovative Technology

- Proven center flue design with submerged coil type condensing heat exchanger
- Heat exchanger is porcelain coated inside and out for increased product life

Flammable Vapor Detection System

- FVIR compliant protective
- Control system that disables the heater in the presence of flammable vapor accumulation

Flexible Venting Options

- Long venting lengths up to 60 feet
- Use 2 or 3 inch diameter PVC, or CPVC certified to ULC-S636 vent pipe options
- Vertical or horizontal termination
- Concentric vent kit available
- Flat termination available

Longer Life

- Dual anode rods protect the tank from corrosion

High Altitude Compliant

- Models are certified for applications up to 9,000 feet above sea level

Plus...

- Brass drain valve and temperature and pressure relief valve are included
- Durable silicon nitride igniter (HSI)
- Inlet tube with diffuser enhances heat transfer
- Front access to condensate trap and vent pipe
- Condensate neutralizer option
- Standard replacement parts

Warranty

- 6-Year limited tank and parts warranty*

* See Residential Warranty Certificate for complete information



Prestige High Efficiency Condensing Power Direct Vent

Induced Draft

38 and 48-Gallon Capacities

Up to 40,000 Btu/h

Natural and LP Gas



INTEGRATED HOME COMFORT



The new degree of comfort.™



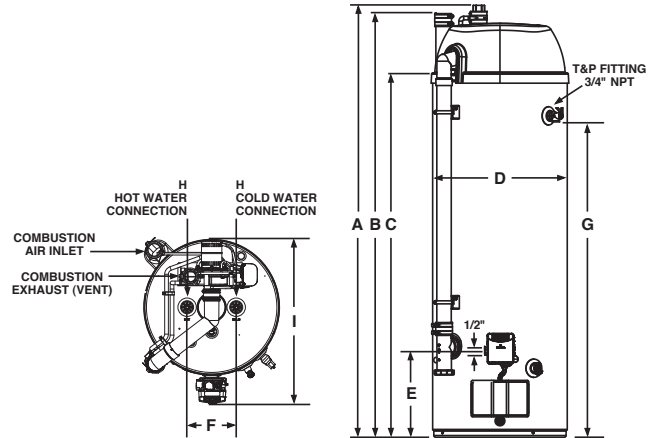
Residential Gas
**Prestige High Efficiency Condensing
Power Direct Vent Water Heaters**

Prestige High Efficiency Condensing Power Direct Vent Specifications

DESCRIPTION			FEATURES					ROUGHING IN DIMENSIONS (SHOWN IN INCHES)										ENERGY INFO.	
T Y P E	GAL. CAP.	MODEL NUMBER	GAS INPUT IN THOUS. BTU/H		RECOVERY IN G.P.H. 90° RISE		FIRST HOUR DEL. G.P.H. NAT. / LP	HT. TO TOP OF VENT A	HT. TO TOP OF AIR INLET B	TANK HT. C	DIAM. D	HT. TO GAS CONN. E	WATER CONN. CNTR. F	HT. TO SIDE T&P VALVE G	WATER CONN. SIZE H	FRONT TO BACK I	SHIP. WT. (LBS)	ENERGY FACTOR (EF)	UNIFORM ENERGY FACTOR (UEF)
SHORT	38	CN RHE40S**	40	36	48.5	43.6	87	62-3/8	61-3/8	51-1/16	22-1/8	14-1/8	8	44-1/4	3/4	26-11/16	220	0.80	0.83
TALL	48	CN RHE50**	40	36	48.5	43.6	87	71	69-5/8	59-11/16	22-1/8	14-1/8	8	52-7/8	3/4	26-11/16	250	0.80	0.80

Specify LP gas when ordering. Add "P" suffix to the model number. Example CN RHE50P.

**Meets Energy Star rating requirement



Air-Inlet and Venting Information for CN RHE40S and CN RHE50

From Sea Level Through 5,999 ft. Above Sea Level					
Model	Vent & Combustion Air-Inlet Pipe Diameter (Inches)	Minimum Allowed Equivalent Vent & Combustion Air-Inlet Lengths – Each Pipe Run (Ft.)	Maximum Allowed Equivalent Vent & Combustion Air-Inlet Lengths – Each Pipe Run (Ft.)	Vent and Combustion Air-Inlet System Termination(s)	
CN RHE40S	2	7	30	90° Elbows	Concentric*
CN RHE40S	3	7	60	90° Elbows	Concentric*
CN RHE50	2	7	30	90° Elbows	Concentric*
CN RHE50	3	7	60	90° Elbows	Concentric*

From 6,000 ft. Above Sea Level Through 8,999 ft. Above Sea Level					
Model	Vent & Combustion Air-Inlet Pipe Diameter (Inches)	Minimum Allowed Equivalent Vent & Combustion Air-Inlet Lengths – Each Pipe Run (Ft.)	Maximum Allowed Equivalent Vent & Combustion Air-Inlet Lengths – Each Pipe Run (Ft.)	Vent and Combustion Air-Inlet System Termination(s)	
CN RHE40S	2	Not Allowed	Not Allowed	–	–
CN RHE40S	3	7	45	90° Elbows	Concentric*
CN RHE50	2	Not Allowed	Not Allowed	–	–
CN RHE50	3	7	45	90° Elbows	Concentric*

One 90° elbow is equivalent to 5 feet of straight pipe. One 45° elbow is equivalent to 2.5 feet of straight pipe.

The vent and combustion air inlet terminations are not included in the equivalency calculations.

* Use only Rheem 3 inch concentric termination kit SP20245.

In keeping with its policy of continuous progress and product improvement, Rheem reserves the right to make changes without notice.

Rheem Canada Ltd./Ltée • 125 Edgeware Road, Unit 1
Brampton, Ontario L6Y 0P5 • www.rheem.ca



INTEGRATED HOME COMFORT